



CONSTRUCTION 60H 60' STRAIGHT BOOM

A high performance, telescopic boom lift designed with extra power and exceptional stability for a wide variety of maintenance, construction and the most demanding high reach access applications. Rugged all-steel fabrication for longer service life.

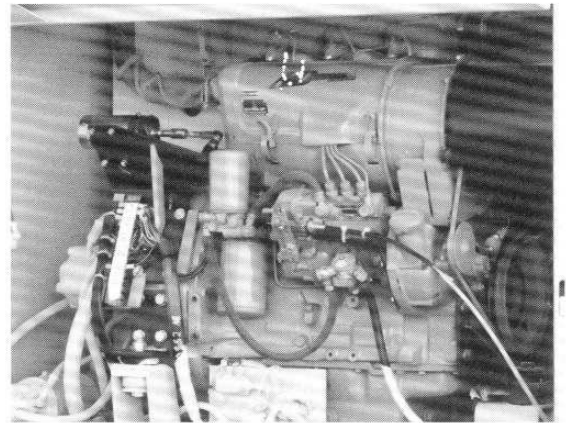


PLATFORM

Large 36" x 60" (.91m x 1.52m) wide basket is standard. Tubular, welded all-steel construction results in excellent durability. Wire mesh to midrail keeps tools and materials within confines of the platform. Steel grate floor is *skid-resistant* and *provides visibility* when lowering platform. Powered rotator is standard for flexibility in positioning platform. Capacity: 1000 lbs. (454 kg.) and 750 lbs. (341 kg.) restricted, 500 lbs. (227 kg.) unrestricted. JLG's exclusive capacity indicator system incorporates a tri-colored tape design on the boom with a capacity indicator wheel which revolves according to changes in boom angle to determine allowable platform load. Higher capacity at the higher (working) angles results in greater worker productivity.

ENGINE

A 63 horsepower-rated gasoline powered Ford LSG-423 water-cooled engine for *efficient, powerful operation*, long service life and reduced maintenance. Precision governor control regulates idle to help *save fuel* and lower operating noise. Optional 47 hp air-cooled Deutz F3L912 industrial strength diesel engine provides ample horsepower and efficient, reliable service when diesel is the power source.



JLG sizes engines for power, efficiency, and long service life. Power choices include gas, dual fuel (gas/LP), or diesel.

PLATFORM CONTROLS

Low maintenance moisture resistant electric/hydraulic proportional controls provide smooth operation for Drive, Lift and Swing. Ramping feature delays full power on and off for *smooth starts and stops*. Telescope, Steer, Platform Leveling, Platform Rotate, Drive Speed, Engine Speed, Wheel Motor Speed Ignition/Start, Auxiliary Power, Horn, Emergency Stop, 5 degree Slope Light and 110 V Receptacle included. 12V DC *auxiliary power provides full function operation* for lowering in the event of main power loss. Optional systems include pilot-operated hydraulic controls for Lift, Swing, Telescope and Drive functions. Low pressure hydraulic oil is used to signal a chassis-mounted main control for smooth operation.

GROUND CONTROLS

Reciprocal control of boom functions allows *complete operation from ground* during maintenance and emergencies. Complete instrumentation includes Platform/Ground Selector Switch, Overrides for ground user control of Lift, Swing and Telescope, Keyed Master Switch, Ignition/Start Controls, Auxiliary Power, Manual Descent for boom retract and lower.

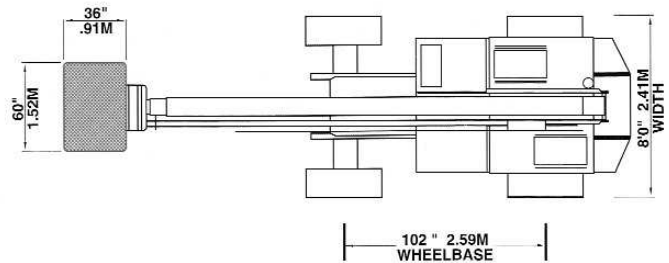
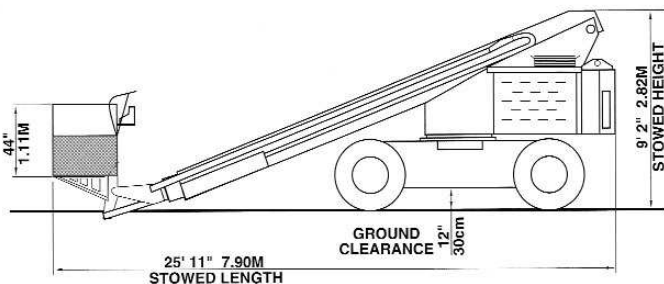
HYDRAULIC SYSTEM

High flow three-section gear pump provides *substantial flow to allow multi-function machine operation*. Large volume, open center, vented reservoir enables constant recycling of hydraulic oil to *maintain low system temperature*. Proportional control valve provides *infinitely variable control* in direct proportion to platform control lever movement.

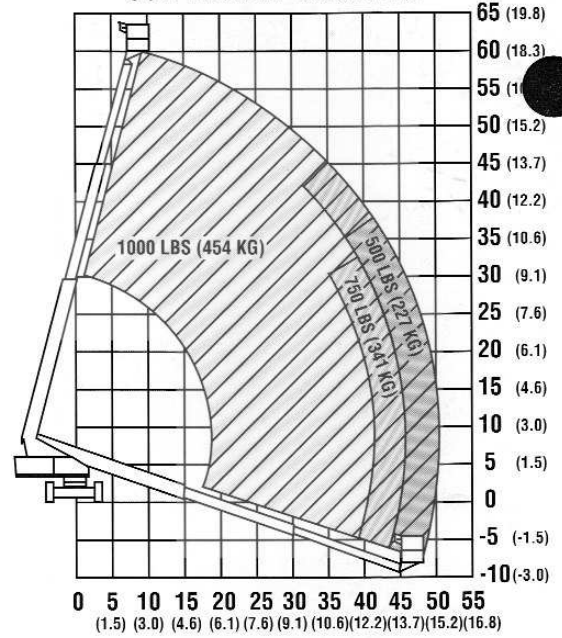
MACHINE SPECIFICATIONS

DIMENSIONS	60H (2WD)	60H (4WD)
PLATFORM HEIGHT	60 ft.	60 ft.
	18.29m	18.29m
WORKING HEIGHT	66 ft.	66 ft.
	20.12m	20.12m
PLATFORM DIMENSIONS-STD.	36' x 60' x 44'	36' x 60' x 44'
	.91m x 1.52m x 1.11m	.91m x 1.52m x 1.11m
PLATFORM CAPACITY (restricted)	1000 lbs. (454 kg.)	1000 lbs. (454 kg.)
	750 lbs. (341 KG)	750 lbs. (341 KG)
PLATFORM CAPACITY (unrestricted)	500 lbs. (227 kg.)	500 lbs. (227 kg.)
STOWED LENGTH	25 ft., 11 in.	25 ft., 11 in.
	7.90m	7.90m
STOWED HEIGHT	9 ft., 2 in.	9 ft., 4 in.
	2.82m	2.84m
WIDTH	8 ft 0 in.	8 ft. 0 in.
	2.41m	2.41m
TAILSWING	3 ft. 7 in.	3 ft. 7 in.
	1.1m	1.1m
GROSS WEIGHT (approx)	(1) 23,000 lbs.	(1) 23,500 lbs.
	(1) 10,442 kg.	(1) 10,669 kg.
ENGINE (gas)	63 HP @ 2800 rpm	63 HP @ 2800 rpm
	47 HP @ 2400 rpm	47 HP @ 2400 rpm
ENGINE (diesel)	63 HP @ 2800 rpm	63 HP @ 2800 rpm
	47 HP @ 2400 rpm	47 HP @ 2400 rpm
MAIN PUMP OUTPUT	39 gpm @ 2800 rpm	39 gpm @ 2800 rpm
	147.8 L/min	147.8 L/min
AUXILIARY PUMP OUTPUT	4.75 gpm	4.75 gpm
	18 L/min	18 L/min
HYDRAULIC TANK CAPACITY	55 U.S. gals.	55 U.S. gals.
	208.2 L	208.2 L
FUEL TANK CAPACITY	26 U.S. gals.	26 U.S. gals.
	98.5 L	98.5 L
TRAVEL SPEED	4.0 mph	3.5 mph
	6.4 km/hr	5.6 km/hr
GRADEABILITY	25%	35%
	14°	19°
TURNING RADIUS (2 wheel steer)	18 ft., 0 in. (5.64 m)	18 ft., 0 in. (5.64 m)
	11 ft., 9 in. (3.58 m)	11 ft., 9 in. (3.58 m)
TURNING RADIUS (4 wheel steer)	50 ft. 0 in.	50 ft. 0 in.
	15.3 m	15.3 m
HORIZONTAL REACH	15.3 m	15.3 m
TIRES (standard)	14 x17.5 pneumatic	15 x19.5 pneumatic
WHEELBASE	102 in.	102 in.
	2.59 m	2.59 m
GROUND CLEARANCE	12 in.	14 in.
	30 cm	36 cm

(1)GVW may increase to meet country standards or with the addition of optional equipment



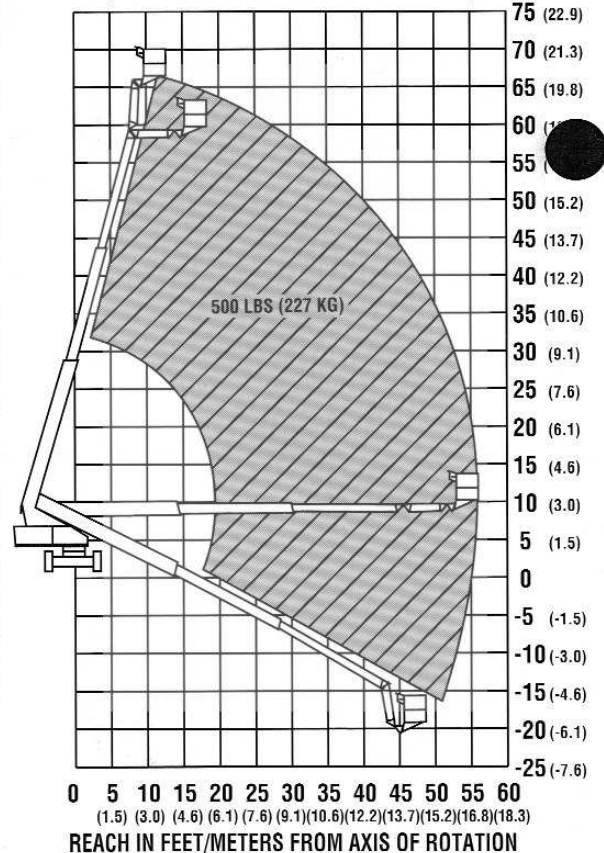
60H REACH DIAGRAM



REACH IN FEET/METERS FROM AXIS OF ROTATION

60H+6 REACH DIAGRAM

(JLG's Patented Extend-A-Reach Feature)



REACH IN FEET/METERS FROM AXIS OF ROTATION



The Extend-A-Reach option articulates 15° above or 80° below horizontal of main boom to give operator "up and over" or "out and down" access.

60H / 60H+6 COMPARISON CHART

SPECIFICATIONS	60H	60H+6
MAXIMUM HEIGHT	60 ft. 0 in.	66 ft. 0 in.
	18.29m	20.12m
MAXIMUM REACH	50 ft. 0 in.	56 ft. 4 in.
	15.3m	17.17m
BELOW GROUND REACH	8 ft. 8 in.	14 ft. 7 in.
	2.64m	4.45m
STOWED LENGTH	25 ft., 11 in.	28 ft. 6 in.
	7.90m	8.69m
BOOM ANGLE (above horiz.) (below horiz.)	75°	75° +15° ART.
	-21°	-21° -80° ART.
PLATFORM (unrestricted) CAPACITIES (restricted)	500 lbs. (227 kg)	500 lbs. (227 kg)
	1000 lbs. (454 kg)	
PLATFORM SIZES (standard)	36 in. x 60 in.	36 in. x 60 in.
	91m x 1.52m	91m x 1.52m
GROSS WEIGHT (approx)	(1) 23,000 lbs.	(1) 26,250 lbs.
	(1) 10,442 kg	(1) 11,907 kg

(1) GVW may increase to meet country standards or with the addition of optional equipment

FOUR-WHEEL STEER

For maneuvering in tight situations, JLG offers four-wheel and crab steer. Four-wheel steer substantially reduces JLG's already short outside turning radius, while crab steer provides one foot of side-ward movement for every two feet of forward, to enable positioning in tight, confined areas.

OPTIONAL EQUIPMENT

Dual Fuel (LP/Gasoline), F3L912 Deutz Diesel Engine, Extend-A-Reach, Four-Wheel Drive, 8 ft. (2.44m) Minimum Underhang Platform (not available with Extend-A-Reach), Worklights Package, Hostile Environment Kit, Foam-Filled Tires, Travel Alarm, Rotating Beacon, Pilot-operated Hydraulic Controls, and CSA Package.

EXTEND-A-REACH

JLG's patented Extend-A-Reach option is a six-foot articulating boom section attached to the end of the fly boom. The main feature of this extension arm is its ability to articulate 15 degrees above or 80 degrees below horizontal of the main boom. The Extend-A-Reach option gives the operator the benefit of "up and over" or "out and down" access in areas where a straight boom would encounter interference with such obstacles as structural steel framework, aircraft tailsections, dock areas and overhead duct work. Articulation is accomplished by a solenoid valve actuated hydraulic cylinder enclosed within the extension tube. Platform leveling is accomplished through a master slave cylinder combined with a pantographic link attaching the platform to the fly boom.



The rugged 60H and 60H+6 are designed to be durable performers even in the most severe environments.



High strength steel boom sections, steel power tracks with self lubricating discs and heavy duty leaf chain extend/retract systems are just a few of the features standard on the 60H.

power telescoping design includes a midsection operated by a double-acting hydraulic cylinder with load-holding valve. Fly section is driven by heavy-duty industrial chain. The chain extension/retraction system is a JLG exclusive and features heavy-duty leaf-type chain. Chain has proven to be a more durable and reliable performer than cable, and requires significantly less adjustment. Self-lubricating discs enable smooth *extension and retraction* for the powertrack which is externally mounted for *easy inspection and maintenance* of hoses and electrical cables.

TURNTABLE/FRAME

Planetary speed reducer driven by hydraulic motor provides *360 degree continuous rotation*. Multiple disc brake is spring-applied, hydraulically released. *Slip-through feature reduces risk of damage to boom and swing components* due to sudden stops or excessive external side forces.

DRIVE SYSTEM

Planetary gear reduction on rear wheels is driven by two-speed reversible hydraulic motors. Flow-divide hydraulic system maintains pressure for *increased grade-climbing capability*. Automatic spring-applied, hydraulically released disc brakes on all drive wheels.

OSCILLATING AXLE/FOUR-WHEEL DRIVE

Optional oscillating front axle “floats” with terrain improving wheel contact for *superior traction* on difficult job sites and outperforms many fixed axle four-wheel drive units. Also available with JLG’s high-powered four-wheel drive system which features torque hub drive on all four wheels, balanced by three flow dividers for responsive, powerful mobility. Hi-flotation 15 x 19.5 self-cleaning tires increase *terrainability*.



Optional oscillating axle and four wheel drive combination provide the means to negotiate demanding conditions.

BOOM

Boom sections are manufactured from high strength alloy steel plates with heavier plates used for top and bottom boom assembly. The plates are fixtured and welded simultaneously on an automatic four-headed welding machine. The result is a durable boom with minimal deflection, long service life and an optimum strength-to-weight ratio. The three section



THE BEST PROTECTION IN THE BUSINESS



The JLG ONE&FIVE Warranty covers the entire machine for one full year and all specified major structural components for five full years. This warranty--the industry's best--represents JLG's commitment to superior quality standards.

SERVICE AND SUPPORT NEARBY... IN EVERY CORNER OF THE WORLD

Along with a high level of engineering expertise, you can depend on JLG's commitment to customer satisfaction. We ship 90% of in-stock parts orders received from JLG distributors within a 24-hour period--a level of service envied by most access and lift equipment manufacturers. Service support is available from factory-trained specialists throughout our extensive distributor network.

Due to continuous product improvements, we reserve the right to make specification and/or equipment changes without prior notification.

This machine meets or exceeds applicable OSHA Regulations in 29 CFR 1910.67, 29 CFR 1926.453, ANSI A92.5-1980, as originally manufactured for intended applications.

JLG Industries, Inc.

1 JLG Drive
McConnellsburg, PA 17233-9533
Telephone 717-485-5161
Fax 717-485-6417



Courtesy of Crane.Market